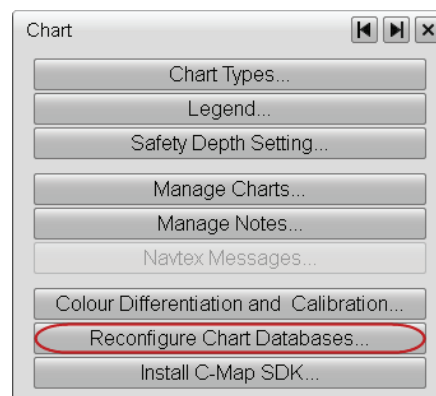
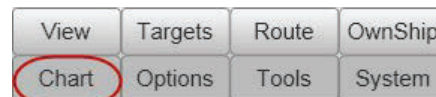
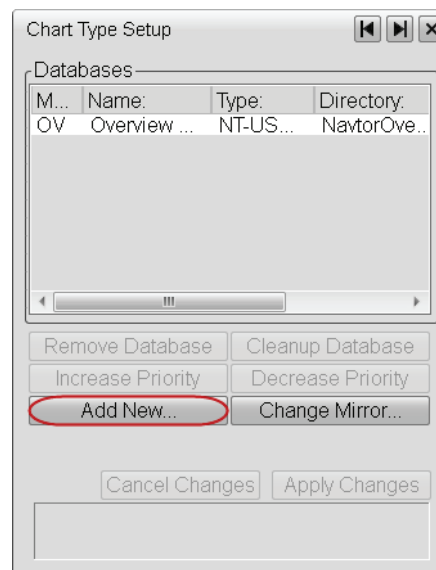


Create an S-63 database (first-time installation only)

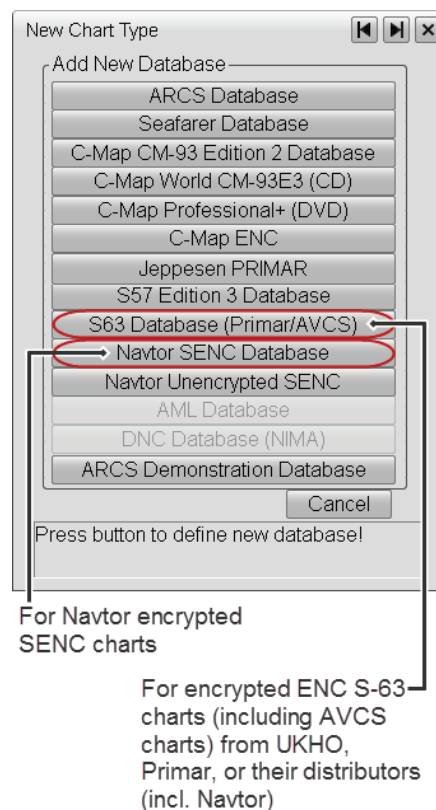
1. Select **System**→**Passwords** (see *Password dialog* on page 569), and enter the service password.
2. Select **Chart**→**Reconfigure Chart Databases**.



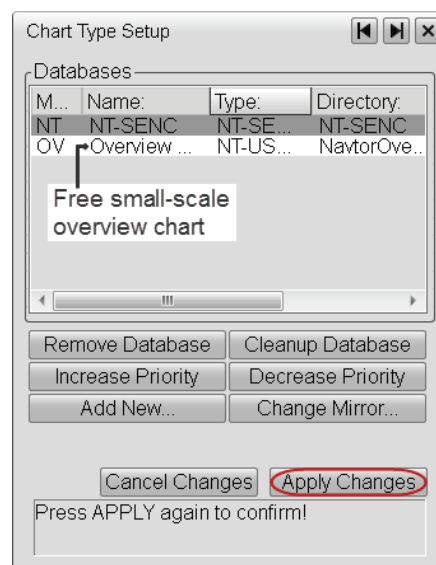
3. Click **Add New**.



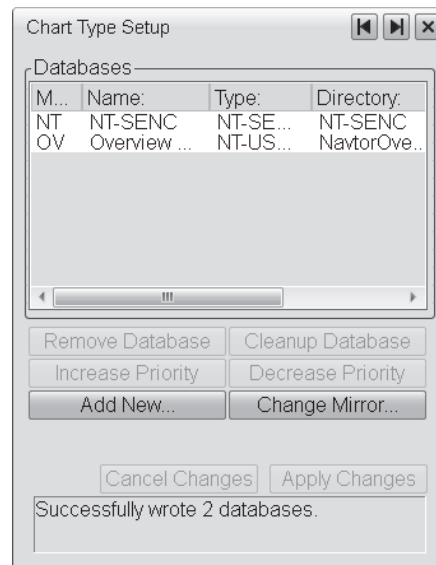
4. Select the database type.



5. Select the new database, and click **Apply Changes** twice.



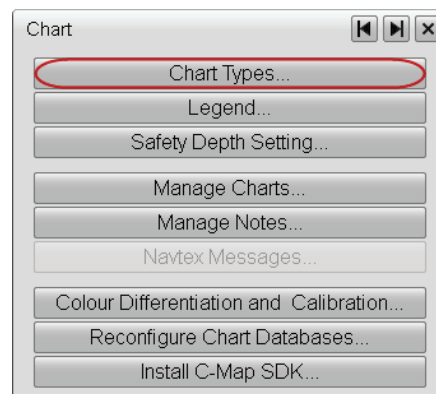
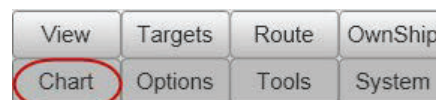
(Confirmation of database creation.)



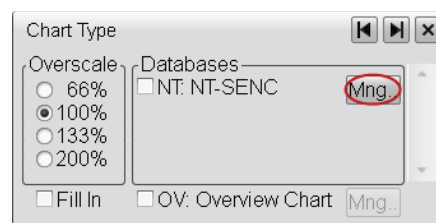
6. Select **System**→**Shutdown**→**Restart Computer** (see *Shutdown dialog* on page 597).
(Click **Restart Computer** a second time to confirm.)

Obtain S-57/S-63 chart permits

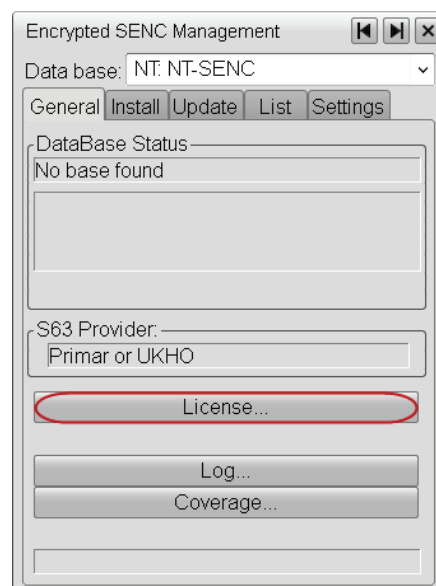
1. Select **Chart**→**Chart Types**.



2. Click the **Mng** button next to the S-57/S-63 chart database.



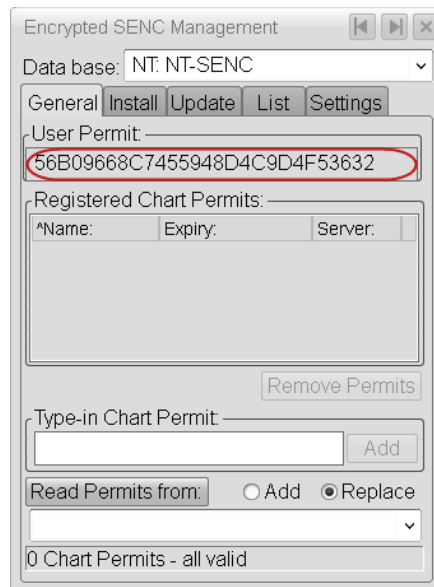
3. In the **General** tab, click **Licence**.



4. Write down the 28-character string that appears in the **User Permit** field.

This string will be used by your ENC supplier – when you contact them – to generate a chart permit for each chart you intend to use on the computer.

Since the chart permits provided by your ENC supplier will be machine-specific, you need to write down the user permit character string for every computer you are intending to use the charts on. So before proceeding to the next step – which is to send the strings to your ENC supplier – find and write down the user permit character string for each navigation operator station computer you are going to use the charts on.



5. Send the character string(s) you wrote down to your ENC supplier.

Your ENC supplier will send machine-specific permits for all the charts you require either by post or e-mail.

For each computer, the permits will be contained in two files called "PERMIT.TXT" and "ENC.PMT". (If you receive permits by e-mail, save the files on a disk or USB stick.)