

Subject: Regarding “the Route Filter” Function of ENC Update Report

We will inform regarding the phenomenon of displaying "Not Up to Date" and "To be ordered" when the update status of a chart is checked by the Route Filter function of ENC Update Report.

Since the Route Filter function is an auxiliary function of selecting cells to be imported, not all selected cells are required on the route due to the reasons shown below. Please judge the selection of the cells according to the operation procedure (SMS etc.) of each ship management company.

1. Cause of the phenomenon

When chart data is imported to ECDIS with chart CD etc., Products.txt showing the boundary of each cell which is one of chart data is also imported.

When the update status of a chart is checked by the Route Filter function of ENC Update Report, the target cell through which the selected route passes will be judged at the boundary indicated by Products.txt.

In various cells, as shown in Fig. 1, the cell of a real region boundary (white frame) is smaller than the boundary (orange frame) shown in Products.txt.

The cell of the small scale (GB1A20M) shown in Fig.1 is not purchased because information necessary for safe navigation is not enough. Therefore, the cell of the large scale on the planned route is purchased.

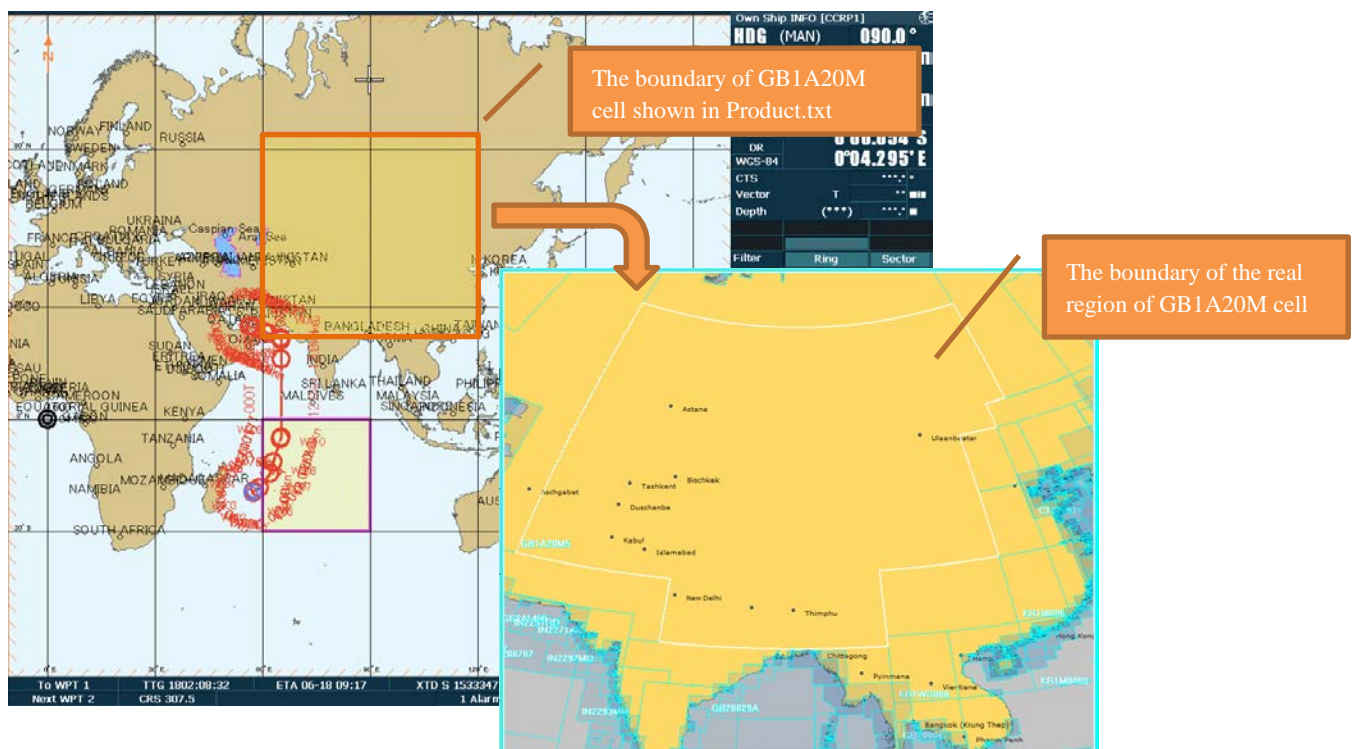


Fig. 1 Example) GB1A20M cell

When the Route Filter function is used on the planned route (Fig. 2) which passes the cell shown in Fig. 1, since the cell of Fig. 1 is also checked as object and this cell has not been purchased, and displayed as follows:

"Not Up to Date": The chart cell has been not updated.

"To be ordered": Purchase of the cell is necessary as action for the update status.

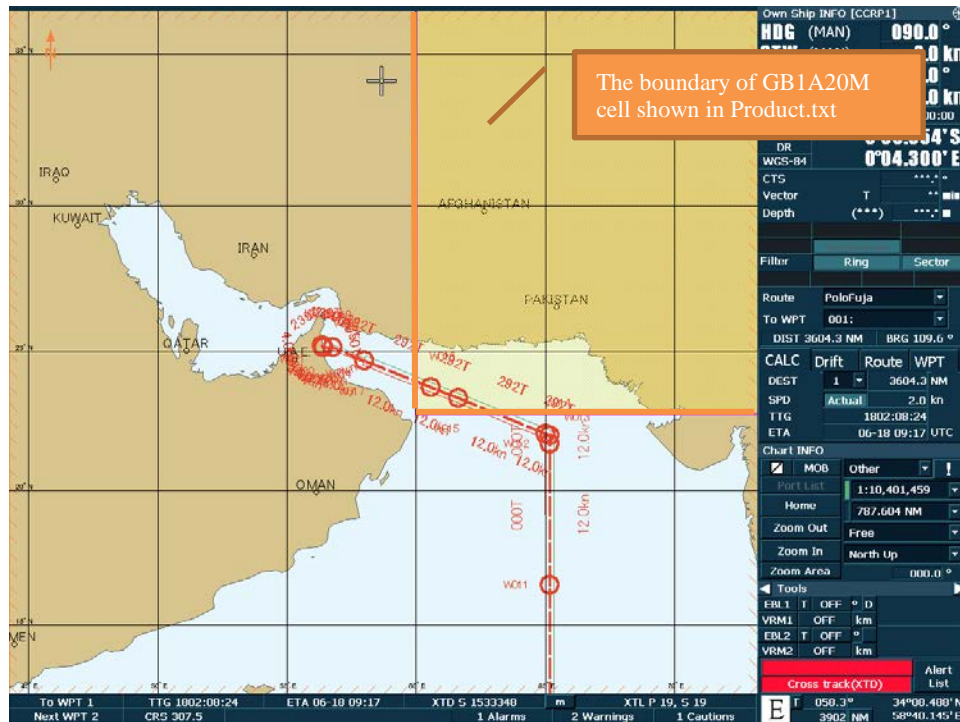


Fig. 2

## 2. The requirements for IHO standards

IHO requires that the chart (SENC) imported against the route leg or all the imported chart (SENC) shall be latest.

<Quote>

*S-63 Ed1.2.0, Annex C, 2 Use and Responsibility*

*The report is designed for two individual use cases:*

*a) To ensure that all ENC cells loaded into the SENC are up to date for the next leg of a particular route*

*b) To ensure that all ENCs loaded into the SENC are up to date.*

<Unquote>

But, when the Route Filter function is used, correct results may not be obtained since the not imported charts are listed even if it is unnecessary for the navigation as above description.

IHO notes this matter as follows.

Therefore, the Route Filter function is merely required as an auxiliary function of cell selection to be imported.

<Quote>

*Action*

*To be Ordered (Route Filtered report only)*

*Definition*

*If, when running the route filtered report, a cell is identified within the data server's service which intersects the route (as defined in 3.3) but the cell is not currently installed, it shall be included in the table with the Action as "To be Ordered". : Note that*

*1) The cell limits defined in the PRODUCTS.TXT for the data server's service shall be used to establish intersection with the route (as defined in 3.3).*

*2) The "advisory" nature of this column should be made very clear to the user as there may be many small scale charts which intersect a particular route, not all of which the mariner considers necessary.*

<Unquote>

### 3. Conclusion

Since the Route Filter function is an auxiliary function for cell selection to be imported, not all cells displayed by this function are necessary.

Regarding cell selection, please confirm the necessity in accordance with the operation procedure (SMS etc.) of each ship management company.